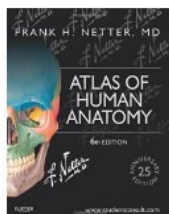


SUGGESTED SEARCH TERMS

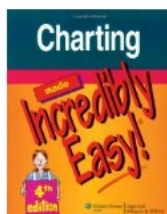
Caregivers	Kidney disease	Peritoneal dialysis
Chronic kidney disease	Kidney failure	Renal disorders
Dialysis	Kidneys	Renal failure symptoms
Fistula	Medical terminology	Supportive therapies
Hemodialysis	Nephrology	Urinary system/Urologic diseases
Human anatomy—Atlases	Patient documentation	Venipuncture

CALL NUMBERS (LIBRARY 2ND FLOOR)

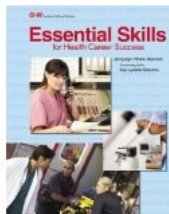
362.175	Terminal care	615	Pharmacology and therapeutics
610	Medicine and health	616	Diseases
610.075	Nursing assessment		
611-612	Human anatomy & physiology		



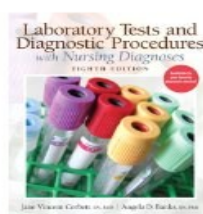
Atlas of human anatomy / Frank H. Netter



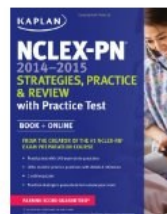
Charting made incredibly easy!



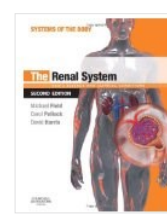
Essential skills for health career success



Laboratory tests & diagnostic procedures



NCLEX-PN 2014-2015: Strategies, practice, & review with practice test



Renal system: Basic science and clinical conditions

DATABASES

[Academic Search Premier](#)

[CINAHL](#)

[Consumer Health Complete](#)

[Credo Reference](#)

[Ebook Central](#)

[Films on Demand](#)

[Gale Virtual Reference Library](#)

[Health Source/Nursing Academic](#)

[Intelecom](#)

[OmniFile Full Text Select](#)

[Medcom Training Videos](#)

[MEDLINE](#)

[Nursing Reference Center](#)

[ProQuest Nursing & Allied Health](#)

[Source](#)

[PubMed Central](#)

[Salem Research—Health](#)

Library Hours

Monday—Friday 7:30 am—10:00 pm

Saturday-Sunday 9:00 am—3:00 pm

Contact Us

Website www.ntc.edu/library

Email library@ntc.edu

Phone 715.803.1115

E-BOOKS

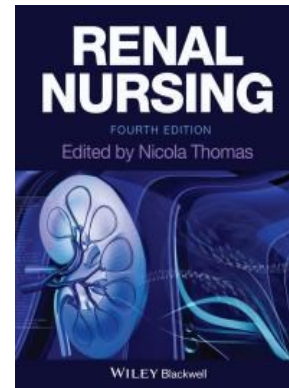
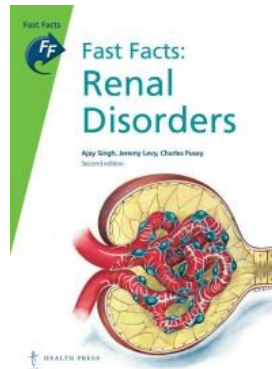
ProQuest E-Book Central

[Fast Facts: Renal Disorders \(2013\)](#)

[Renal Nursing \(2013\)](#)

Salem

[Magill's Medical Guide \(2014\)](#)



STREAMING VIDEOS

Intelecom

[Functioning Kidneys \(2014\)](#)

Films on Demand

[Proper Transfer Techniques for the Health Care professional \(2011\)](#)

ACADEMIC JOURNALS

[American Journal of Nephrology](#)

[Journal of Renal Care](#)

[Journal of the American Society of Nephrology](#)

[Kidney International](#)

[Nephrology Nursing Journal](#)

[Nephron. Clinical Practice](#)

[Renal Failure](#)

ORGANIZATION WEBSITES

[American Society of Nephrology \(ASN\)](#) —Leads the fight against kidney disease by educating health professionals, sharing new knowledge, advancing research, and advocating the highest quality care for patients.

[National Kidney Foundation](#)— Prevention, kidney disease, patients, organ donation & transplantation, professionals, & advocacy

[National Institutes of Health National Institute of Diabetes and Digestive and Kidney Diseases](#)

Library Hours

Monday—Friday 7:30 am—10:00 pm

Saturday-Sunday 9:00 am—3:00 pm

Contact Us

Website www.ntc.edu/library

Email library@ntc.edu

Phone 715.803.1115