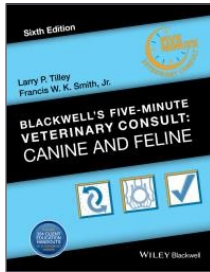
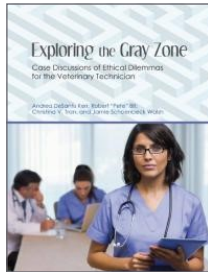


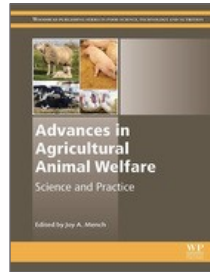
E-BOOKS [Click on titles](#)



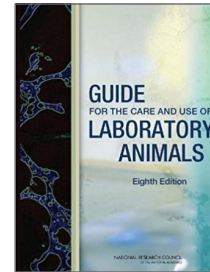
Blackwell's Five-Minute Veterinary Consult



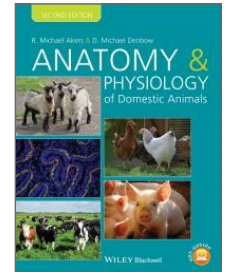
Exploring the Gray Zone



Advances in Agricultural Animal Welfare



Guide for the Care & Use of Laboratory Animals



Anatomy and Physiology of Domestic Animals

SUGGESTED KEYWORDS

Agriculture tourism

Anatomy—animals

Animal care

Animal experimentation

Animal health

Animal husbandry

Animal science

Animal welfare

Domestic animals

Human-animal relationships

Livestock

Veterinary medicine

Veterinary science

Zoo animals

Zoology

STREAMING VIDEOS



Veterinary Technician—
Career Q & A



Farming & Agriculture



Starting a Pet Day Care &
Training Facility



Livestock—Raising

DATABASES

Academic Search Premier

Business Source Premier

Credo Reference

Ebook Central

Films on Demand

GreenFILE

Issues & Controversies

MasterFILE Premier

MEDLINE

Opposing Viewpoints

ProQuest Research Library

Science Reference Center

Today's Science

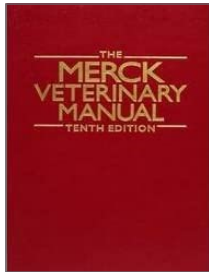
Contact Us

Website www.ntc.edu/library

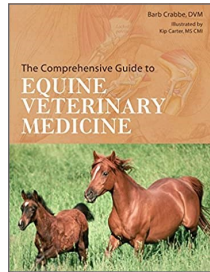
Email library@ntc.edu

Phone 715.803.1115

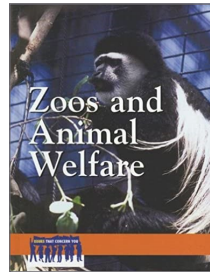
BOOKS (PRINT)



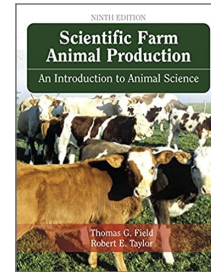
636.089 M537



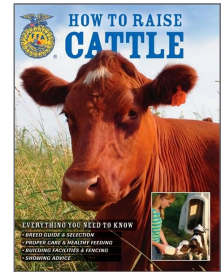
636.1089 C84c



590.73 Z76



636 F458s



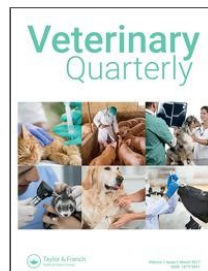
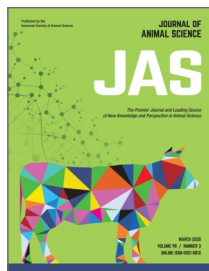
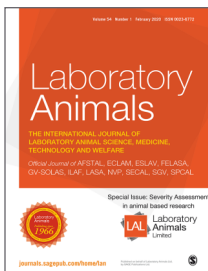
636.2 H273h

[Browse current *Print* titles for this program](#)

SHELF NUMBERS (LIBRARY 2ND FLOOR)

630	Agriculture	636.3	Sheep, goats
636	Livestock, animal husbandry	636.5	Poultry
636.08	Veterinary pathology	636.7	Dogs
636.1	Horses	636.8	Cats
636.2	Cattle		

ACADEMIC JOURNALS [Click on images](#)



ADDITIONAL RELATED WEBSITES [Click on links](#)

- [American Animal Hospital Association](#)
- [American Association of Bovine Practitioners](#)
- [American Association for Laboratory Animal Science](#)
- [National Institute for Animal Agriculture](#)
- [Wisconsin Veterinary Technician Association](#)