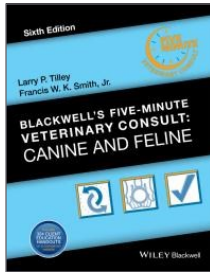
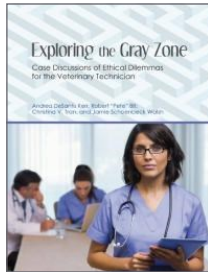


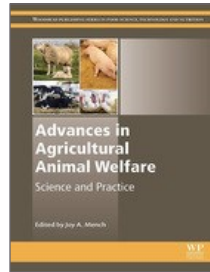
## E-BOOKS Click on titles



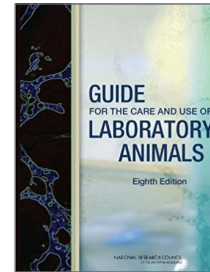
Blackwell's Five-Minute Veterinary Consult



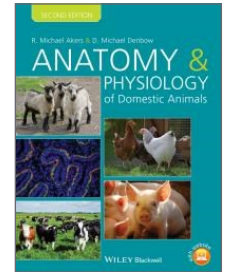
Exploring the Gray Zone



Advances in Agricultural Animal Welfare



Guide for the Care & Use of Laboratory Animals



Anatomy and Physiology of Domestic Animals

## SUGGESTED KEYWORDS

Animal health technology  
Anatomy—animals  
Veterinary services  
Animal health  
Animal husbandry  
Medical Ethics

Animal diseases  
Animal welfare  
Domestic animals  
Human-animal relationships  
Livestock  
Job stress

Therapeutics  
Veterinary medicine  
Veterinary emergencies  
Care procedures  
Zoology  
Medical errors

## STREAMING VIDEOS



Veterinary Technician—Career Q & A



Farming & Agriculture



Starting a Pet Day Care & Training Facility



Livestock—Raising

## DATABASES

Academic Search Premier

LinkedIn Learning

ProQuest Research Library

Public Library of Science: Biology

Films on Demand

Science Reference Center

National Agricultural Library

GreenFILE

Encyclopedia of Life

Credo Reference

MasterFILE Premier

Science.gov

Ebook Central

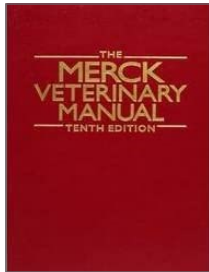
PubMed

Today's Science

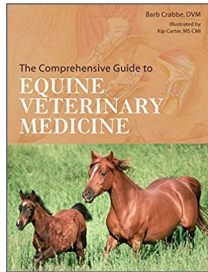
### Contact Us

Website [www.ntc.edu/library](http://www.ntc.edu/library)  
Email [library@ntc.edu](mailto:library@ntc.edu)  
Phone 715.803.1115

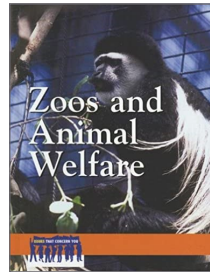
## BOOKS (PRINT)



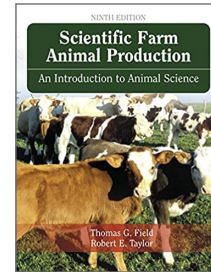
636.089 M537



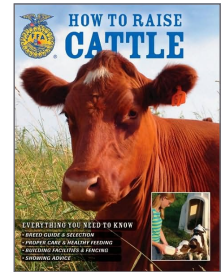
636.1089 C84c



590.73 Z76



636 F458s



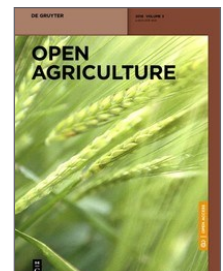
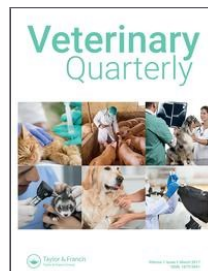
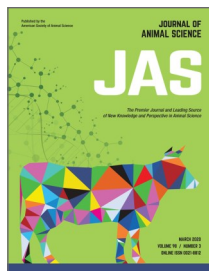
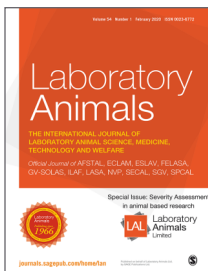
636.2 H273h

[Browse current \*Print\* titles for this program](#)

## SHELF NUMBERS (LIBRARY 2ND FLOOR)

630	Agriculture	636.3	Sheep, goats
636	Livestock, animal husbandry	636.5	Poultry
636.08	Veterinary pathology	636.7	Dogs
636.1	Horses	636.8	Cats
636.2	Cattle		

## ACADEMIC JOURNALS [Click on images](#)



## ADDITIONAL RELATED WEBSITES [Click on links](#)

- [American Animal Hospital Association](#)
- [American Association of Bovine Practitioners](#)
- [American Association for Laboratory Animal Science](#)
- [National Institute for Animal Agriculture](#)
- [Wisconsin Veterinary Technician Association](#)